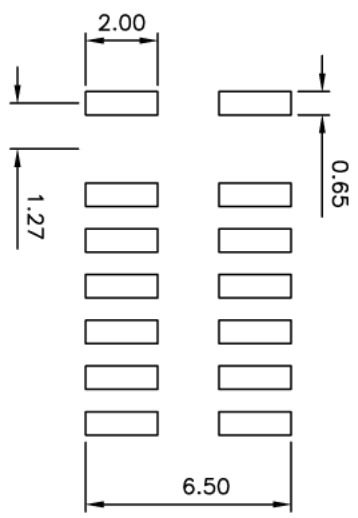
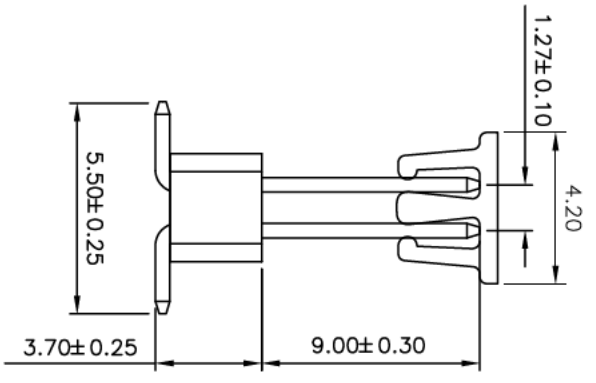
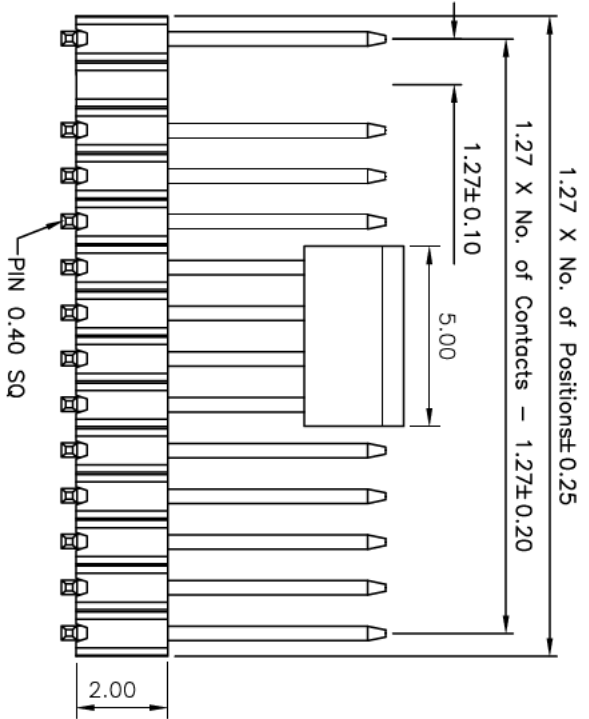
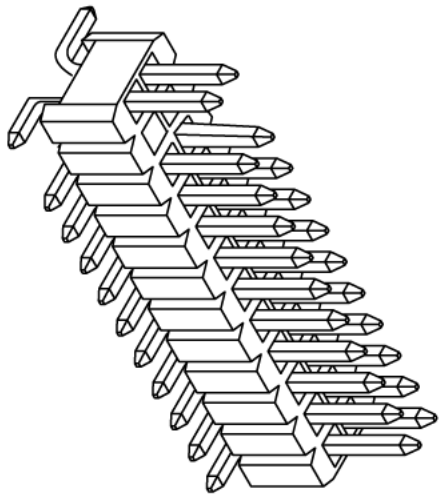
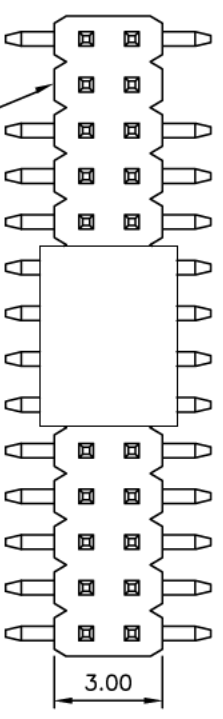


REV.	LOOKS.	DESCRIPTION	DATE	DRAWN
01		INITIAL RELEASE.	2011.04.30	



Specifications
 Current Rating: 1Amp
 Insulation Resistance: 1000M Min. Ω
 Dielectric Withstanding: 300V AC
 Contact Resistance: 20m MaxΩ
 Operating Temperature: -40°C to +105°C

Materials
 Contact Material: Brass
 Insulation Material: Polyester, NYLON-6T UL 94V-0

All materials must be GP materials

RECOMMENDED P.C.B LAYOUT



GENERAL TOLERANCE

X. ± 5.0°	X. ± 0.30
.X ± 3.0°	.X ± 0.25
.XX ± 2.0°	.XX ± 0.15
.XXX ± 1.0°	.XXX ± 0.10

DESIGN:

CHECKED:	DATE: 2011.04.30
AUDITED:	DATE:
APPROVED:	DATE:

PART NO.

SM C02 1271 XXBD: WO-L2
 1.27x1.27-E=9.0 With Cap REEL

TITLE:

Pin Header Dual Rows, Single Insulator,
 SMT, Without 2 Row Pins,
 Packing T&R+CAP,
 XX = number of poles

REV.	UNIT.	SCALE.	PAGE.
01	mm	1:1	1/1

A

B

C

D

E

F

1 2 3 4 5 6 7 8 9

A

B

C

D

E

F